

# Leather Repair Aerosols

A complete system of Leather Repair Aerosols used to color over damages on pigmented leather (top coated) where there is color loss or the leather has been repaired. The aerosols are designed to enable you to match most of the leather furniture that is popular today. They are especially effective at repairing two-tone finishes which are otherwise so difficult to match.

## M850-9005 Leather Repair Aerosol System

**Leather Repair Basecoats** - Heavily pigmented, opaque coatings used to hide the damage while starting the coloring process.

**Leather Repair Toners** - Medium pigmented translucent toners designed to apply semi-transparent color. Used to darken the color of a Basecoat or to apply a stipple affect in two-tone leather finishes.

**Leather Color Adjusters** - Lightly pigmented colorants using very fine ground pigments, these aerosols will apply transparent color. Used according to color theory to fine-tune the color of the repair.

**Leather/Vinyl Finish™** - Clear finishes used to adjust the sheen of the repaired area to match the sheen of the leather being repaired.



### The Leather Repair Process



Leather damage



Apply Basecoat



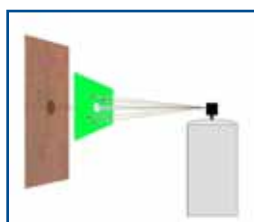
Apply Toner



Apply Color Adjuster



Apply Clear Leather/Vinyl Finish™



Tip: Reduce overspray by spraying through a hole in a sheet of paper

### Color Theory

Opposing colors denote complementary colors, which neutralize each other. If a repair is too strong in a color, apply its complement with a Color Adjuster to correct the hue.



## Leather Repair Basecoats

Heavily pigmented, opaque coatings used to hide the damage while starting the color process.



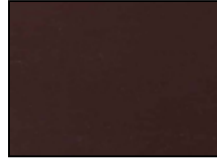
M109-3001  
Coppertone



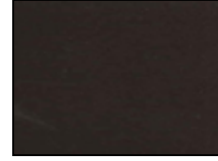
M109-3002  
Light Tan



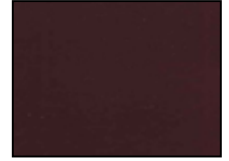
M109-3003  
Warm Brown



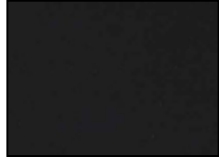
M109-3004  
Burnt Umber



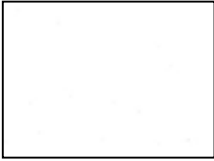
M109-3005  
Cool Brown



M109-3006  
Burgundy



M109-3007  
Black



M109-3008  
White



M109-3009  
Beige



M109-3010  
Medium Brown



M109-3011  
Red

## Leather Repair Toners

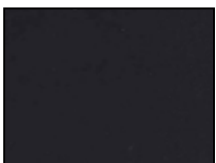
Medium pigmented, translucent toners designed to apply semi-transparent color. Used to darken the color of a Basecoat or to apply a stipple affect in two-tone leather finishes.



M109-5001  
Warm Brown



M109-5002  
Cool Van Dyke Brown



M109-5003  
Black

## Leather Repair Color Adjusters

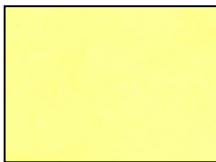
Lightly pigmented colorants using very fine ground pigments, these aerosols will apply transparent color. Used according to color theory to fine-tune the color of the repair.



M109-4001  
Orange Brown



M109-4002  
Red



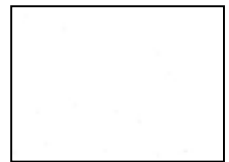
M109-4003  
Yellow



M109-4004  
Blue



M109-4005  
Green



M109-4006  
White



M109-4007  
Black

## Leather/Vinyl Finish™

Clear finishes used to adjust the sheen of the repaired area to match the sheen of the leather being repaired.

M109-0629 Gloss

M109-0630 Satin

M109-0631 Flat

**See our training video on  
YouTube at**

[http://www.youtube.com/  
watch?v=1boQhuGBQes](http://www.youtube.com/watch?v=1boQhuGBQes)

